



Quarterly Report

Term 2, 2023

TRACTION

FOR YOUNG PEOPLE

Message from the CEO

Welcome to our Term 2, 2023 report.

We talk about lightbulb moments as the critical points of change happening week-to-week at TRACTION. These are the moments when young people discover a strength, feel truly seen and accepted, or find connections with friends. It's when they realise they are good at and do love learning, but haven't had the chance to learn in a way that works for them. These are the moments which provide our young people with a renewed lens and sense of hope - for learning, for their personal lives and their futures - and we are proud of our unique mentoring approach to practical learning which enables these moments to occur.

Our recently finalised 2021-2022 Impact Report captures these critical moments of change for our young people, and positions TRACTION mentoring programs as a powerful early intervention and prevention strategy. It affirms that TRACTION is successful at improving young people's educational engagement, wellbeing and skill development to equip them for future success, and highlights how while our time for influence is short, the impact we leave is deep and lasting.

You can read about TRACTION's impact measurement methodology and results for 2021-2022 by accessing our first Impact Report on our website. For now, we hope you enjoy reading this update from Term 2

which shares some exciting news and inspiring stories from our organisation and the incredible individuals we support.

Our work would not be possible without the generosity of our long standing and generous supporters, and further support is always needed to ensure we can keep up with demand and continue providing innovative approaches to support young people.

Please reach out to see how you can get involved, help raise awareness, or provide support that makes a difference.

Yours sincerely,



Sandy Murdoch



It was priceless. He had really bad grades and lost all his confidence. The program helped give him his confidence back. It helped his maturity as well because he was outside the school environment and was treated more like an adult. Without the program he wouldn't have turned his grades around. And the other stuff (through chats and activities) he learnt from TRACTION has helped across the board.

Parent/Guardian,
Term 2



TRACTION helps kids to centre and reset, and gives kids joy back. It was exactly what my son needed; he felt and experienced being safe and as an Indigenous boy, this was incredible.

Parent/Guardian,
Term 2

2.

Term Two Highlights



We delivered ten full-term programs and four one-day Bike Build programs in TRACTION workshops, schools and community centres across South East Queensland.

Victoria Point State High School

Six young people from Victoria Point State High School displayed strong enthusiasm and teamwork when completing their Bike Build projects. The group hosted special visitors - the Hon. **Di Farmer MP**, Minister for Youth Justice along with local **Don Brown MP** for Capalaba who were interested to learn more about TRACTION as a prevention and early intervention solution.

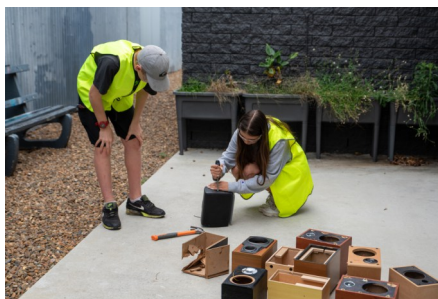


Bremer State High School

Mentors Anna and Jamie supported six young people from Bremer State High School to complete their Bike Build projects, and we saw strong improvements for this group in school engagement, confidence, and communication skills.

Holland Park State High School

Six young people from Holland Park SHS joined TRACTION for a second term, this time completing their Boom Box projects with support from mentors Jim and Anna.



Pimpama Secondary College

We continued our close working relationship with Pimpama SC and supported another six of their young people to complete their Bike Build projects.

“ TRACTION works because it helps me behave at school and listen more carefully to instructions.

Participant, Term 2

Emmaus College

Six students from Emmaus College completed TRACTION's Bike Build program with the support of our Beaudesert mentor team.



Park Ridge State High School

Mentors Ben, Jamie and Mike worked with eight young people from Park Ridge State High School in our first Building Deadly Riding Deadly pilot program. The group enjoyed learning from each other during the cultural awareness and yarning opportunities and achieved strong outcomes around cultural identity, wellbeing and teamwork skills.



Wynnum State High School

We continued our strong partnership with Wynnum SHS and another six young people jumped on the tools with mentors Anna and Jaime at our Alexandra Hills workshop.

Alexandra Hills State High School

Over in the Redlands, mentors Jim and Jaime worked alongside young people from Alexandra Hills SHS. The group hosted TRACTION partner Powertech in week 7, who provided insights on training and career pathways, and gave an informative session on solar energy.



Mt Gravatt State High School

We welcomed new school partner Mt Gravatt SHS for the first time at our Yeerongpilly workshop, with six of their young people taking part in TRACTION's Bike Build program.

Arcadia College

Arcadia College returned, with six of their young people taking part in TRACTION's Bike Build program at the Coomera Girl Guide Hut.

Defence One-Day Workshops

TRACTION mentors delivered four one-day Bike Build workshops with Defence young people from Mitchelton State High School, Mt Maria College Petrie, Springfield Central State High School and St Augustine's College.



One-day workshops are a great way to experience a 'taste' of TRACTION full-term programs while still providing benefits for young people. Thanks to Defence Australia's Family Support Funding Program for providing TRACTION with generous funding to support young people in the Defence community.



Building Deadly, Riding Deadly

The pilot of our new culturally safe Bike Build program 'Building Deadly, Riding Deadly' is underway in Logan.

Following completion of their program in term two, participants from Park Ridge State High School reported having a better understanding of their cultural identity and feeling more connected to cultural staff at school. They felt safe, accepted and included by mentors and peers during the program, and now feel better about attending school.

We acknowledge and give thanks to Aunty Faith and her team at Gunya Meta Inc for partnering with us for the past 12 months, where in addition to supporting TRACTION to build a solid culturally safe program framework, TRACTION's organisational knowledge and capability in the First Nations space has significantly grown.



TRACTION looks forward to strengthening this program and partnership as we continue to learn, adapt and grow to meet the needs of our First Nations young people. As always, our deepest gratitude to the Sisters of the Saddle cycling community whose incredible cycling and fundraising efforts have made this all possible.

Building Our Capability

Our team undertook strengths-based skills training with the brilliant **Unique Outcomes** - an enlightening session which examined three core TRACTION approaches underpinning our work with young people (strengths-based, trauma-informed, and youth-centred practice), and how we can deliver best practice group facilitation under this framework.

Thanks to Amy - Unique Outcomes facilitator, and to the Redland City Council for funding the session as we deeply value these learning opportunities to connect, refresh and develop our skills to bring the most powerful mentoring experience we can for our young people.



“ It also made me more positive because I get to work more with peers with no fears and no limited tears, and others for the same reason.

Participant, Term 2



“ Knowing people are in the same boat as me helps with my confidence, because going here and seeing others struggle with focusing helps me know I'm not alone.

Participant, Term 2

Meeting Demand in Brisbane's North



Pete – cyclist, coach, engineer, and youth mentor, has been appointed as Regional Coordinator for the North Brisbane/Moreton Bay Region.

After 15 years in engineering, Pete trained assistance dogs in an innovative Pups in Prison rehabilitation program for women, worked for a cycling tourism business, and coached large groups for charity cycling events. It was through one of these charity cycling events that Pete was connected with TRACTION, and the rest is history!

Just three months into his new role, Pete has been busy building

a strong network of local partners and referral agencies on the north-side, including among others; Act for Kids, Deception Bay State High School, and Morayfield State High School. Under Pete's leadership and with these partners behind us, TRACTION is well positioned to reach more young people needing support than ever before.

Pete's love for helping people has also led him to return to study Occupational Therapy this year, and we can't wait to see some of his learnings applied in TRACTION workshops.

People of TRACTION

Earlier this year, we welcomed Kaitlyn, who has taken on a newly created role within TRACTION's Fundraising and Partnerships team that involves overseeing all the data, events, and tasks related to TRACTION's fundraising activities.

We asked Kaitlyn what she enjoys about working at TRACTION, and she said:

"I love what TRACTION stands for and how passionate the team is about giving young people a chance to build a positive future for themselves. After a long stint in the corporate world, I wanted a new challenge but most importantly, I wanted to work for a greater cause and give back to the community".

When Kaitlyn isn't in our support hub, you can find her exploring Brisbane with a cup of coffee in hand, sweating it out at an F45 class, or spending time with her loved ones.



Thank you, Kaitlyn, for bringing such positive energy to the office and creating the vital infrastructure needed to support TRACTION's growing fundraising platform!

Visit from Queensland's Youth Justice Minister

In Term 2, we had a visit from the Hon. Di Farmer MP - Minister for Employment and Small Business, Minister for Training and Skills Development and Minister for Youth Justice along with local Don Brown MP for Capalaba.

TRACTION staff were interested to hear about Minister Farmer's intended strategies for her new Youth Justice portfolio and our young people from Victoria Point State High School did a fantastic job explaining the TRACTION program and its benefits for them.



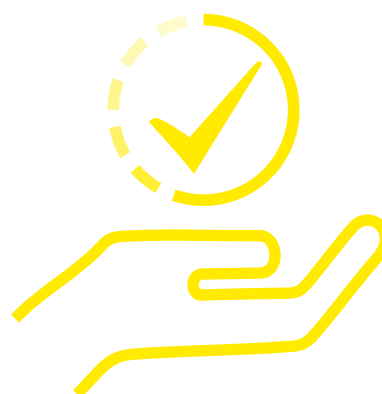
During Minister Farmer's visit, our team had the opportunity to discuss the issue of youth crime and how early intervention and prevention programs like TRACTION are an important part of the solution.

We know every dollar spent on flexible learning options for young people generates \$25 in socio-economic returns and saves \$32,000 in youth justice and welfare costs. And by intervening early, there is a much greater chance of preventing a child's later involvement in the criminal justice system and improving their life outcomes.

We were really thrilled to share TRACTION's purpose, programs and impact in detail and want to extend a huge thank you to Minister Farmer for identifying TRACTION as an important voice in the youth sector and youth justice discussion.

3.

Our Impact



Term 2- Key Numbers

85	Young people engaged from:
18	Redlands
12	Brisbane South
8	Logan
6	Ipswich
6	Scenic Rim
12	Gold Coast
23	Holiday and mobile workshops
95%	Program completion rate
90%	Program attendance rate
56	Bicycles donated to young people
3,509	Hours of mentoring provided
3	Types of programs delivered including Bicycle Build, Boom Box, and 1-day/school holiday formats
6	Number of regions where programs were delivered
10	Program delivery locations

Since July 2015

2,181	Young people engaged from:
683	Redlands
384	Brisbane South
41	Brisbane North
154	Logan
200	Scenic Rim
88	Ipswich
68	Gold Coast
40	Moreton Bay
523	Holiday and mobile workshops
1,827	Bicycles donated to young people
93,193	Hours of mentoring provided



It helped me grow more confidence, because I learned about myself and others through the program.

Participant, Term 2

Results For Young People

Engagement in learning



100% of parents agree that the program helped their child develop the skills to cope better with school demands

75% schools reported of young people have improved with school effort

54% of students improved their school attendance during TRACTION

Resilience and mental health



98% of participants felt confident to persevere or try again if they made a mistake

89% of parents/guardians noticed an improvement in their child feeling more positive about themselves

67% of parents/guardian reported improved relationships with family

83% schools reported of young people have improved self-confidence

Behaviour and skills



78% of parents/guardians reported improved behaviour

61% of parents/guardians noticed an improvement in coping and help seeking skills

89% of participants understand the impact of their choices

78% of participants reported improved relationships with teachers,

73% with family members

87% of participants reported improved skills for leadership, and

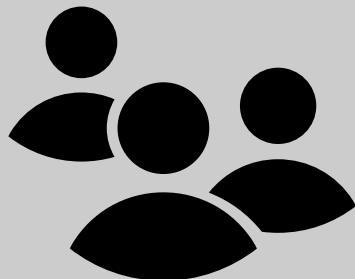
95% for teamwork

79% schools reported of young people have improved teamwork skills

79% schools reported of young people have improved practical skills to manage school



How Your Support Makes A Difference



Louis, 19, completed his TRACTION program in 2019 and we caught up with him in Term 2 as part of TRACTION's "Where are They Now" project, an initiative which aims to measure the longer term impact of TRACTION programs.

During our visit, Louis shared how support from TRACTION came at a critical time in his schooling years and the experience provided a lightbulb moment which changed the course of his life. Louis realised he loved working with his hands and practical learning, and it was during TRACTION that his career pathway became clear. After completing TRACTION, Louis secured a job in a bike shop and is currently completing his apprenticeship to become an electrician.



“ I was never going to be the boy that was going to get my ATAR or great grades and go to uni. TRACTION got me ready to do TAFE in years 10 and 11. It set me up well for my next few years.

Louis, TRACTION participant, 2019

“ Louis is a really practical kid, so having that hands-on learning was really important. The skills he learnt there helped him go to TAFE, helped him get his job, and helped him to get where he is now with his apprenticeship.

Louis' Mum

“ I learnt to try my best and never give up. It's a healthy environment for young people.

Participant, Term 2

What Our Schools Say

“ TRACTION gives a hands-on application to the pastoral skills we are trying to teach our young people at school. It's engaging for students who struggle with the traditional learning environment.

“ TRACTION helps young people to work on confidence, teamwork and leadership skills. It helps them to communicate with each other, adults and share their experiences throughout the program.

4.



Partnership Focus

Sisters of the Saddle Foundation Launch

We gathered to celebrate and acknowledge the tremendous impact of the **Sisters of the Saddle** (SoTS) as they launched their official foundation.

Since TRACTION's first engagement in 2021, we have seen the Sisters of the Saddle build their community of inspirational cyclists and bring positive impact to the communities around them. Their support of TRACTION has not only empowered young people in our programs but has also given TRACTION a greater organisational capacity, and strongly formed community relationships that will continue to provide hope and opportunities for young people who need it most.

TRACTION is thrilled to continue our journey together into 2023, and we look forward to achieving our aligned mission to create positive change for young people across South East Queensland.

The Kennards Hire Foundation

Members of TRACTION's leadership team travelled to Sydney for Kennards' Gathering for Good event. They took part in a workshop alongside other youth not-for-profits and left feeling very inspired by the many amazing youth initiatives happening around Australia and the genuine comradery with common goals to achieve positive outcomes for young people.

We are in year three of our three-year partnership with The Kennards Hire Foundation, and another \$50,000 this financial year will go a long way towards supporting program delivery and capacity building initiatives.



The Bryan Foundation

We are in year two of our second three-year partnership with The Bryan Foundation and another \$50,000 this financial year will go towards program delivery in the Moreton Bay and Ipswich regions.

The Morgans Foundation

We are in the first year of our second three-year partnership with The Morgans Foundation and another \$30,000 this financial year will go towards program delivery. A huge thanks to Morgans for their support - financially and physically in TRACTION workshops as volunteers.



He feels a lot more respected and is responding a lot more positively. Having the chats with the mentors made a big difference to how he viewed life. The kids are given an opportunity to challenge themselves. With the support of the mentors they achieve goals and that improves their confidence.

Parent/Guardian,
Term 2

5.

With Thanks From TRACTION

Our deepest gratitude to all these fantastic organisations who are prioritising young people's positive futures by choosing to support TRACTION. Together, we're making a difference and we're beyond grateful for their support.

Thank you...

- **The Cory Foundation**, who has supported TRACTION with \$20,000 for the purchase of bikes, which will become the main mode of transport for newly arrived Queenslanders taking part in one-day workshops. The late Doug Cory passed away recently and was a long-time supporter of TRACTION. Our most heartfelt thanks to Doug and the Cory family for their significant and lasting impact on the non-profit sector in South East QLD.
- **Defence Australia's Family Support Funding Program**, for providing TRACTION with \$48,000 to deliver one-day workshops and term-based programs for young people in the defence community in 2023/24.
- **The Kevin and Thelma Driscoll Foundation** for donating \$10,000 towards program delivery.

- **The East Leagues Club** for donating \$12,000 towards program delivery.
- **Fitzpatrick Family Charitable Trust** for donating \$7,500 towards program delivery.
- **Redlands Foundation** for donating \$20,000 towards program delivery in the Redland Bay Region.
- **The Siganto Foundation** for donating \$12,000 towards program delivery.
- **Portfolio Creative Services** for providing pro bono work to help TRACTION rebrand.
- **UnLtd** for providing a \$15,000 grant to re-tool TRACTION workshops.
- **Kofi Foundation** for donating \$4,500 to buy the necessary equipment to deliver safe mobile outreach programs.
- **The Lions Capalaba** for donating \$1,500 towards program support in the Redland Bay region.

Give young people the tools to thrive

Join TRACTION's support crew and sign up as one of our valued regular donors.

Every donation we receive - big and small - puts us another step forward on our mission to build positive futures for more young people. Becoming a regular donor is also super easy, and donations to TRACTION are all tax deductible.

Join our support crew by signing up through our website:

<https://traction.community/support-us>



It completely breathed new life into him about going to school because he was looking forward to TRACTION so much and enjoyed what he was doing. He actually wants to go to school and it's keeping him motivated to get into the Boom Box program next year.

Parent/Guardian,
Term 2

6.

Coming Up

CEO Bike Build Friday 8 September

We're heading back to the Port of Brisbane on Friday 8 September for our five-year anniversary of the CEO Bike Build. With CEOs and business leaders behind us and 'on the tools' with our young people, we hope to raise \$200,000 to support at-risk young people in TRACTION programs.

You can sign up to be a CEO participant, or donate to one of our CEOs supporting TRACTION young people to take the lead.

<https://ceo-bikebuild.traction.community/donate>

Larapinta Open Polo Sunday 10 September

TRACTION is proud to be the 2023 Charity Partner for the Larapinta Open Polo, to be held on Sunday, 10 September at the Larapinta Equestrian Centre.

TRACTION's social marquee boasts a fresh springtime design, with live entertainment and prizes. A lunch service will be catered by Three Girls Skipping and a cash bar will be provided by Cloudland. All proceeds raised on the day will help fund the delivery of TRACTION programs across southeast Queensland.

Tickets to the Marquee for TRACTION at the Australian Open Polo are available to purchase online now. <https://lnkd.in/gfCtEkVN>

7.

About TRACTION

Our mission is to spark potential in young people. We believe that everyone deserves the chance to unlock their potential.

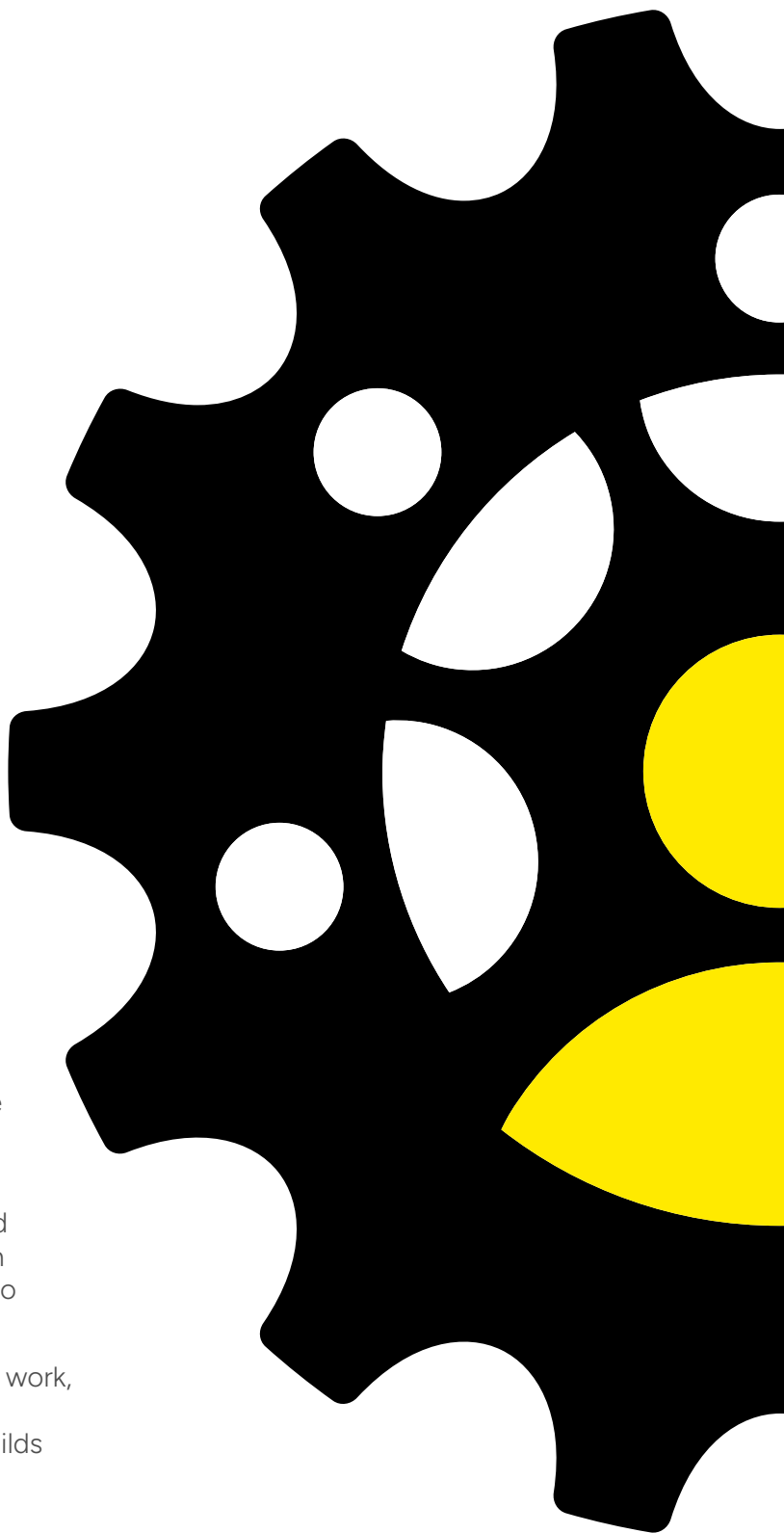
We deliver evidence-informed, hands-on learning and mentoring programs, to help young people engage in learning and build the resilience and skills they need to thrive.

To find out more about TRACTION, or to support our work, please visit www.traction.community, contact us at connect@traction.community or follow [@tractionbuilds](https://www.instagram.com/tractionbuilds) on Instagram, Facebook and LinkedIn.



It connects kids to a hands-on skill opportunity that gets them to think differently about life choices and their future and gets them out of the school classroom to try and think in a different way. A lot of the time he doesn't feel like he is succeeding at anything but with TRACTION he did and that was great for his self-confidence.

Parent/Guardian, Term 2





TRACTION

FOR YOUNG PEOPLE

Postal: PO Box 389, Paddington QLD 4064

Phone: 07 3102 9565

Email: connect@traction.community

 facebook.com/tractionbuilds

 instagram.com/tractionbuilds

 linkedin.com/company/traction-community

www.traction.community